

DiSTI Map™ Toolkit



The DiSTI Map Toolkit plug-in for GL Studio allows developers to create real-time 2-D moving map displays for desktop-based applications.

DiSTI Map™ Toolkit



Map Data Formats

- » Extendable architecture supports multiple map formats and symbology:
 - DTED
 - GeoTIFF
 - CADRG
 - DNC
 - AIF (JPEG, PNG, TIFF, ETC.)
 - GL Studio Objects

Develop Moving Maps with Ease

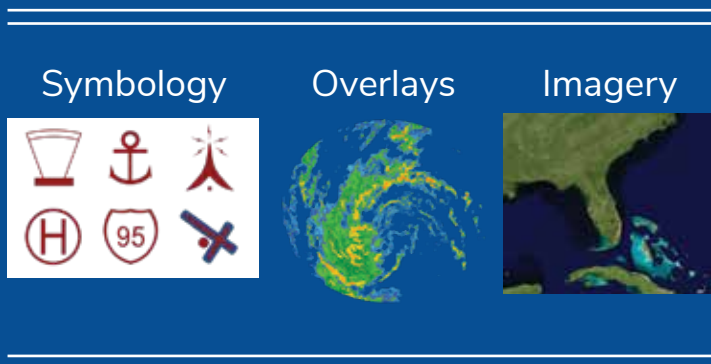
The DiSTI Map Toolkit plug-in extends the GL Studio Designer functionality to include developing real-time 2-D moving map display content for desktop-based applications. The plug-in provides the capability to combine multiple geo-referenced map imagery formats and user-defined symbology across multiple layers to produce a single real-time 2-D map view.

Features

The DiSTI Map Toolkit provides the features and functionality to mimic any existing map interface or create a new whole new look:

- » Simple integration into GL Studio projects
- » Hardware supported map rendering
- » Pan, rotate, and zoom capability
- » Auto-resolution based on Altitude
- » Out-of-the-box or user-defined symbology
- » Seamlessly add paths and waypoints
- » Pre-cache map data
- » Dynamic paging of map imagery

Map Toolkit Process Flow



Map Assets



DiSTI Map Tool

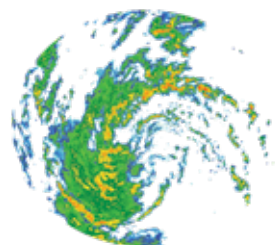
Symbology

This toolkit provides a quick and easy method to overlay user-defined symbology, created from GL Studio objects. Out-of-the-box symbology includes 40 standard aviation symbols with full HSI and quarter HSI. It also includes the MILSTD 2525 B with 4 affiliations, 12 echelons, and 113 unit symbols.



DiSTI Arbitrary Image Format

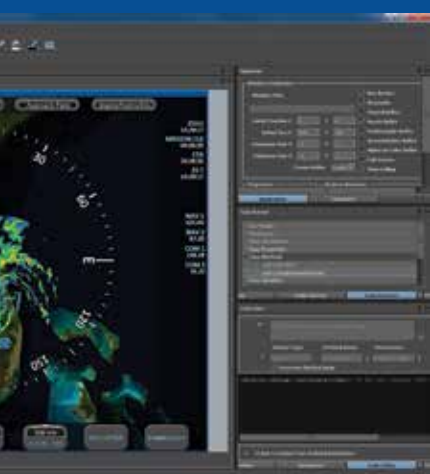
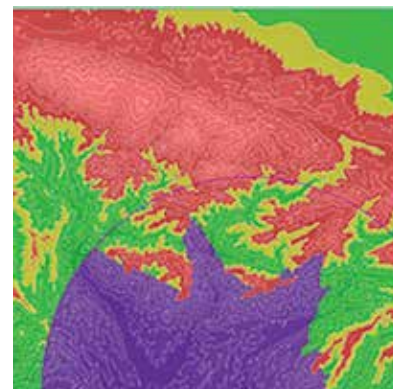
DiSTI created a standard method for inserting geo-referenced map imagery layers from any standard image file format supported by GL Studio. The Arbitrary Image Format utilizes an XML schema to define sets of geo-referenced map imagery layers. This feature allows developers to expand how they utilize the toolkit portraying data from disparate resources in a single display.



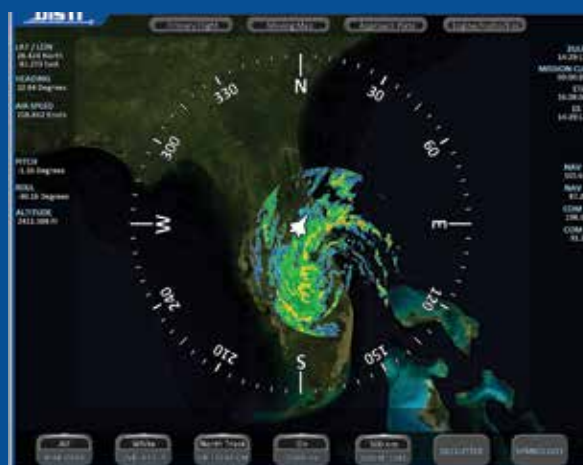
Elevation Data

The all new support for DTED elevation data allows users to integrate the following capabilities:

- » 2-D Terrain map with runtime controllable “moonscape” shading
- » Up to 16 elevation bands with configurable colors based on height of band relative to ownship altitude
- » Threat rings with line-of-sight shading based on location and height of threat above terrain
- » Contour lines with configurable color, line thickness, smoothing, and spacing



DiSTI Map Toolkit in GL Studio



DiSTI Map Toolkit in User Application

Imagery, Objects, and Icons

The DiSTI Map Toolkit offers the flexibility to combine the components necessary to produce high quality 2-D mapping applications. Below is a sample anatomy.

The central screenshot shows the DiSTI Map Toolkit interface. It features a central map area with flight paths, altitude markers (30, 60, 120, 150, 210, 240, 300, 330), and various icons. The interface includes several control panels:

- Data Visibility:** A vertical stack of buttons on the left: CADRG, DNC, GeoTIFF, AIF, AIF, and MAP DATA.
- Color Control:** A vertical stack of buttons on the left: White, Yellow, Green, Red, White, and OVRLAY CLR.
- Zoom Control:** A vertical stack of buttons on the right: 500 nm, 200 nm, 50 nm, 25 nm, 10 nm, 5 nm, 1 nm, 5 nm, and ZOOM LEVEL.
- Map Orientation:** A vertical stack of buttons on the left: North Track, Track Up, Track Up, and ORIENTATION.
- Symbology Control:** A horizontal panel at the top right with buttons for TOGGLE SYMBOLOGY ON/OFF, SYMBOLOGY COLOR (with a color picker), and various symbology icons (50, 60, 120, 150, 210, 240, 300, 330, M, A, M, A, ALL OFF, ALL ON).
- Layer Control Visibility:** A horizontal panel at the bottom right with buttons for HDG, SPD, P/R, ALT, TMSN CLK, ETA, EST, NAV, COM, ALL OFF, ALL ON, and DECLUTTER.
- Overlay Visibility:** A horizontal panel at the bottom left with buttons for TOGGLE OVERLAYS ON/OFF, WHTR, STRT, WTR, ALL OFF, ALL ON, and OVERLAY.

For more information on all of our products and services, please visit www.disticom

12249 Science Drive, Suite 300
Orlando, FL 32826 | 407-206-3390



www.disticom